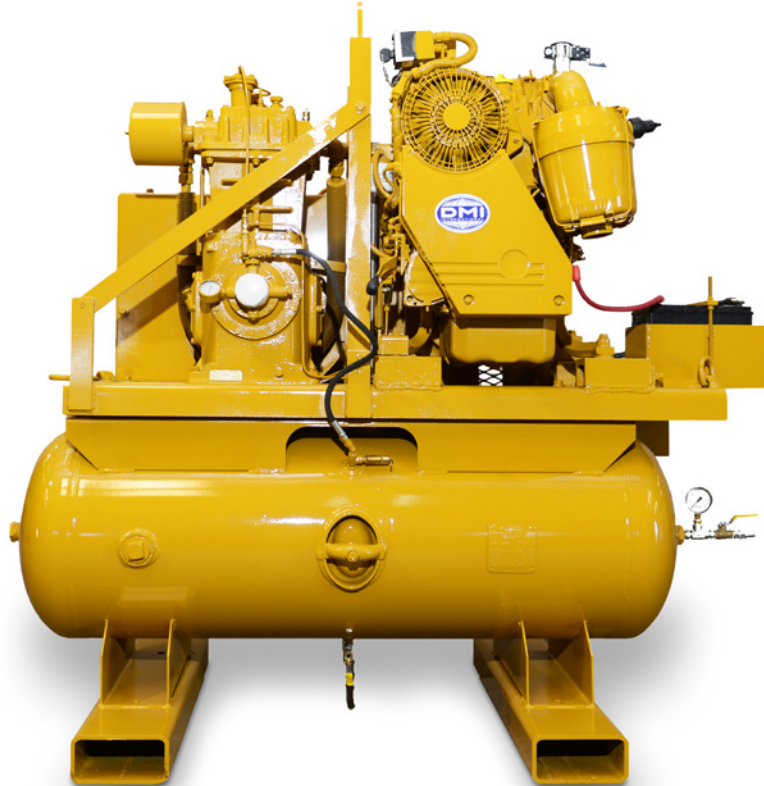




AIR COMPRESSORS



Design Features

- Designed to complement DMI pneumatic equipment - foot-mounted, complete, ready to operate
- Working range is up to 225 psi (15.3 atm)
- Minimum range compressed air supply is 180-200 psi (12.2-13.6 atm)
- 25CFM - Model #325
- 40CFM - Model #340 73"x 36"x 69" (1880 mm x 940 mm x 1803 mm) 2,075 lbs. (941 kg) (30 HP Duetz, 2 Cylinder motor)
- 90CFM - Model #390 76"x 48"x 78" (1778 mm x 1219 mm x 1981 mm) 2,650 lbs. (1202 kg) (46 HP Duetz, 3 Cylinder motor)
- Specified power units include:
 - HTD - Diesel engine with electric start
 - HTE - Electric motor, at customer's required voltage

AVAILABLE OPTIONS:

- Air tank certified to special (non-U.S.) standards
- Centerlift hook
- Pipe bending machine mounting bracket
- Roll-over cage